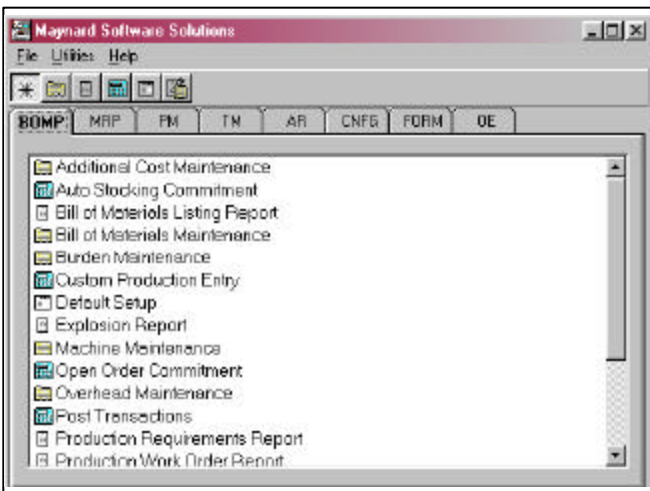


Bill of Materials Processor

The Power to Control Production Materials, Work in Process, and Finished Products...

The Bill of Materials Processor (BOMP) is an affordable solution for PFW/PFD manufacturing clients that are material intensive and need to manage their production process. First released in November of 1994 BOMP has proven its reliability in over 300 installations. Fully functional demonstration software is available to ensure complete customer satisfaction.



Building bills of materials your way...

Bill of Material Entry is designed to give you maximum flexibility while creating and modifying your bills of materials. For example you may specify if BOMs are unique by Item Key + Location or Item Key and Engineering Code. Also, if you choose to make the BOMs unique by Item Key and Location, then you may setup a BOM for Assembly ABC in Location 1 and have a different BOM for assembly ABC in each additional location. The cloning feature quickly generates new BOMS for similar assemblies and new processing locations. A global item key change is also included, allowing you to replace a component throughout a range of BOMS.

Optional Tables for added Flexibility

Costing your bill of materials will become more precise using the Additional Cost, Burden Cost, & Overhead Cost Maintenance tables.

You may incorporate your production notes, assembly instructions, and/or any unlimited "block of text" on the BOM using the Standard Text maintenance table. Other optional tables allow you to assign Responsibility keys to the FG and link components to a machine key.

Best's PFW Integration

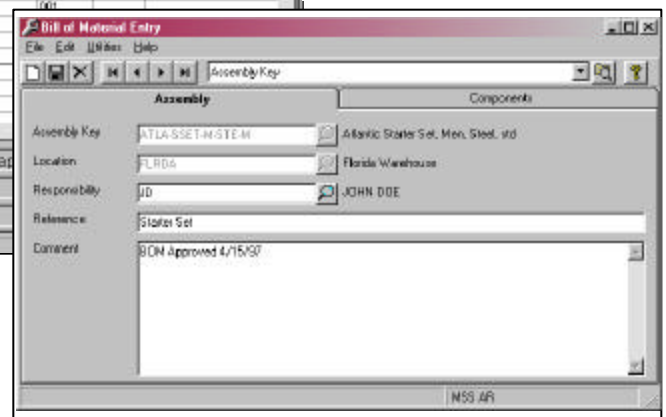
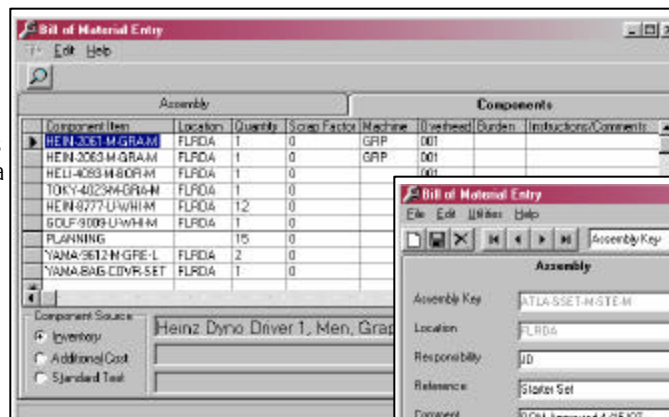
BOMP is designed with the look and feel similar to PFW, allowing a smooth transition between the two products. There is no need to worry about an interface because our system processes everything for you. BOMP integrates with PFW/PFD standard modules seamlessly, reading from and writing directly to the files. We try to allow you to use all four of the Inventory costing methods, serial/lot tracking, multiple locations and multiple processing companies.

Pervasive Integration

Our enhancements will work in conjunction with multiple versions of Pervasive database engines. We use standard program calls to access the Platinum database; therefore, the Pervasive database engine will work for both Platinum and our enhancements.

Highlight Features

- BOMP is a Windows based product, developed in Visual Basic, and uses a Microsoft Access database format to store BOM and transaction information.
- Seamlessly integrated with Best's PFW (versions 4.6 through 5.0) and PFD 4.6.
- Easily create, clone, and modify multi-level BOM's, containing up to 99 levels.
- Modify BOMs for individual work orders, without changing the standard BOM.
- Process 12 transaction types at 4 levels.
- Supports Serial/Lot Tracking.
- An Affordable Manufacturing Solution!



Maynard Software Solutions, Inc.

2555 W 6200 North Smithfield, Utah 84335 Web Page: <http://www.maynardsoft.com> Main Office: (435) 563-1840 Support: (800) 672-9462

Unmatched Flexibility in Processing Transactions

Controlling your manufacturing process...

BOMP gives you the power to select the type of manufacturing process you will use when entering and posting transactions. We allow you to make to stock (using our Auto Stocking Commitment feature), make to order (using our Open Order Commitment feature), or manually enter work orders. The Transaction Processing program allows the user to process BOM data through 12 transaction types and four different processing levels. Serial/Lot Number tracking is available on applicable transaction types.

The Transaction Entry screen is designed to maximize efficiency while entering work orders, including the option to auto-number transactions and set user defined defaults for most fields. Custom changes may be made to the bill of material for each transaction, by accessing the Detail screen and adding, deleting, or modifying the components. The Production Work Order Report will print the customized transaction information in a "pick list" format for the shop floor.

Transaction Types

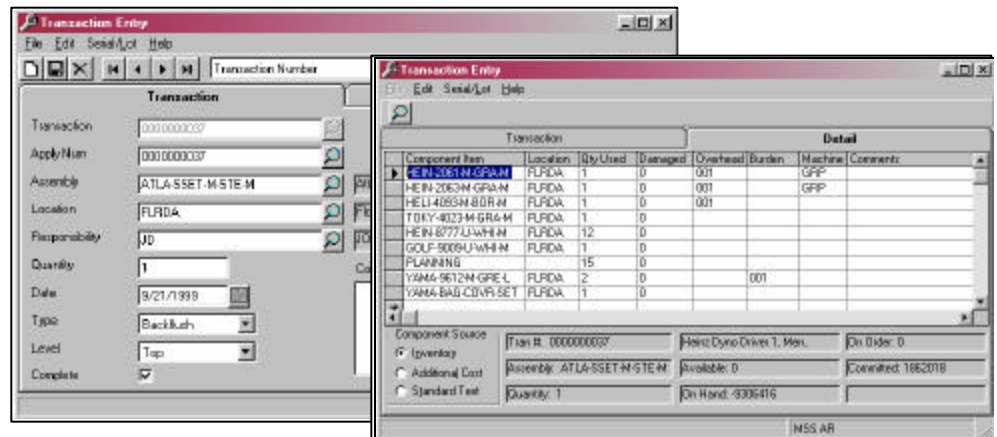
- Backflush will manufacture the finished - good item and reduce the inventory on-hand quantities for the selected level of materials.
- Commit will allocate components to the "committed-to-production" Platinum field and, if selected, an "on-order" transaction will be created for the assembly.
- Move-to-WIP transactions will move components to a specified Work in Process location.
- Manufacture closes to a previous Commit or Move transaction and the functionality of a Backflush transaction
- Disassemble performs a reverse Backflush transaction.
- Undo reverses the items and quantities of the original transaction.
- Additional transaction types are available if you also have our Shop Floor Control module or if you are interfacing BOMP to the PFW Project Cost module.

Processing Levels

- Top will build the assembly from the first level of components on the BOM.
- Raw will build the assembly from the last level of components on the BOM, processing transactions at this level will allow the sub-assembly items to be "phantom" items or non-stocking inventory items.
- Compute and Modifiable will check the BOM one level at a time to determine available stock quantities of the sub-assemblies and raw materials. The sub-assembly will be built from the first level of available components.

An optional Select Transactions for Posting screen is available, allowing you to view all open transactions, sort the transactions, and select a non-sequential range of transactions.

The Transaction Posting screen includes the option to print an edit report before posting and the option to print a detailed posting summary report. You may post all transactions or selected ones. You may also restrict what is posted by transaction number range and/or a user assigned Responsibility range.



Reporting Capabilities

BAR Codes - Using fonts that we supply, bar codes may be added to any report in our system by simply adding the bar code font into the desired Crystal Report format.

BOM Listing - Sequencing this report by the component item implodes the BOM to print a "where-used" report listing all the assemblies in which the component is directly used. Selecting the Assembly filter prints the first level of the BOM for a specified range of assembly keys. The report may also be sequenced by the BOM reference number, which lists the assemblies that are associated to the specified reference number.

BOM Explosion - Prints an indented BOM, with level numbers, item keys, descriptions and locations. Also printed are the quantity, unit cost and extended cost for each component. The report includes the option to use different costing methods to determine the unit cost for items. An option is included to "MOVE COSTS" allowing you to move the BOM computed cost to the Standard, Market, Reorder, or Carry cost field in PFW/PFD. You may also use Scrap Cost to calculate the total cost of building the BOM.

Production Work Order - Generates a "pick list" authorizing production to manufacture the assembly. The assembly detail is generated using the standard BOM or the customized work order.

Production Requirements - Allows the user to generate a "What IF" report to determine the maximum production amount of an assembly based upon the current on-hand or available quantities of the raw materials. This report also allows the user to view how a Manufacture, Backflush or Disassemble transaction will affect component on hand and available quantities.

Transaction Status

Prints a detailed list of transactions, including component information and calculated costs. Allows the user to track quantity remaining and related transaction information throughout the manufacturing process.

Open Transaction

Prints a list of all open transactions, including the transaction number and the transaction type of the open transaction.

Platinum
for Windows by Best

Maynard Software Solutions, Inc.

2555 W 6200 North Smithfield, Utah 84335 Web Page: <http://www.maynardsoft.com> Main Office: (435) 563-1840 Support: (800) 672-9462