

# BOM Configurator

BOM Configurator is an affordable add-on module for our Bill of Material Processor users that need to customize the bill of material at the point of order entry. This program interfaces with both BOMP and PFW/PFD's Order Entry module allowing you to view and modify the bill of material and configure a custom price for your client. You may setup standard options for each inventory item and then access the options while configuring the bill of material. Fully functional demonstration software is available to ensure complete customer satisfaction.

**Best's PFW Integration...**

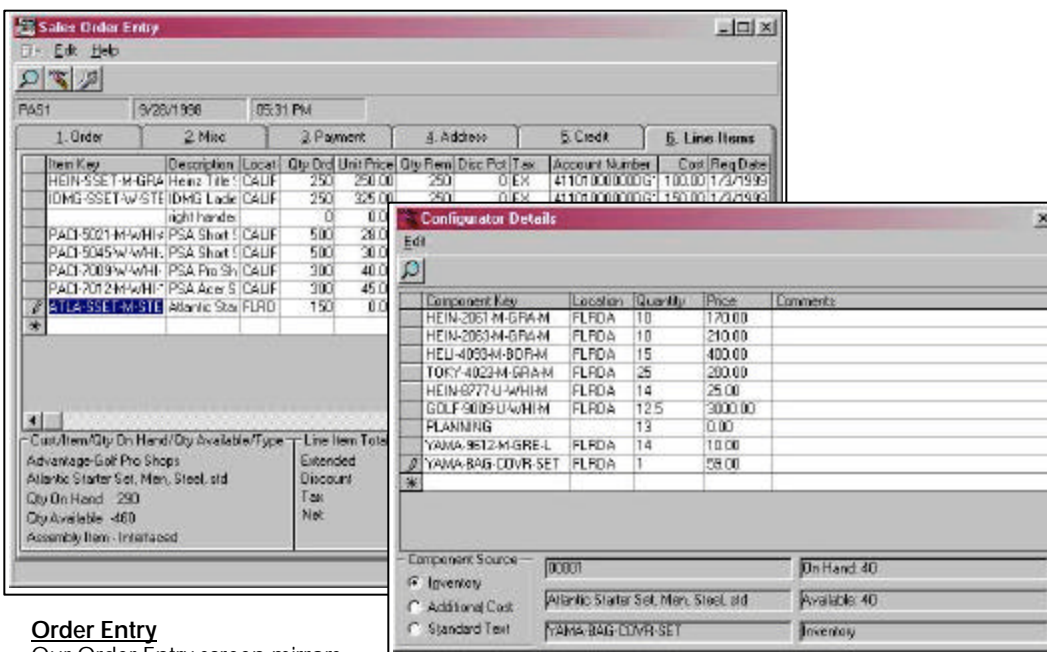
BOM Configurator is designed with the look and feel of PFW, allowing a smooth transition between the products. There is no need to worry about an interface because our system processes everything for you. We integrate with PFW/PFD standard modules seamlessly, reading and writing directly to the files.

**Pervasive Integration...**

Our enhancements will work in conjunction with multiple versions of Pervasive database engines. We use standard program calls to access the Platinum database; therefore, the Pervasive database engine will work for both Platinum and our enhancements.

**Highlight Features**

- BOM Configurator is a Windows based product, developed in Visual Basic , and uses a Microsoft Access database format to store data.
- Seamlessly integrated with Best's PFD and PFW modules.
- Quickly configures custom pricing for clients.
- Perfect for Make to Order Manufacturing Companies!



**Order Entry**

Our Order Entry screen mirrors PFW/PFD and includes the same information. The system informs you when an item has an associated bill of material setup in BOMP and at the click of a button you may view the BOM information.

**Configurator Details**

The detail screen displays the BOM information and allows you to add new components, delete components, change component quantities and change the components price. The changes are for this order only and will not update your standard bill of material or create custom item keys, saving you from having a huge custom inventory file. When you are finished modifying the BOM, all you do is click the close button and a new assembly price is configured for you. If you have setup the optional items table, you can select a component item and quickly zoom on all the available options.

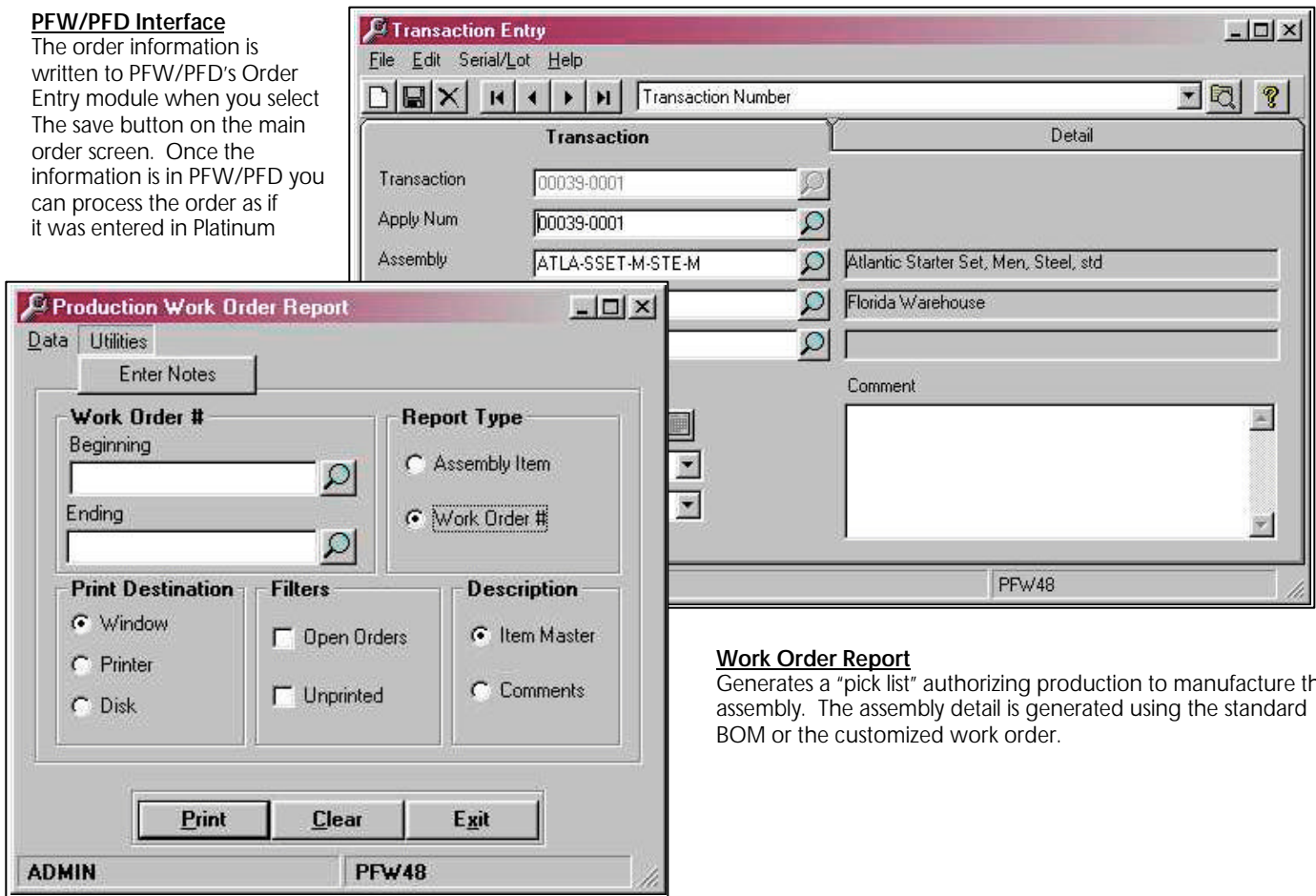
# Interfacing

## Bill of Material Processor Interface

BOM Configurator will interface to the Bill of Materials Processor if changes have been made to a BOM item or if the "Interface to BOMP" button is selected on the line item. The transaction number is created using the order number and the order line the item was entered on. The transaction detail will be created using the customized BOM information. You may then process the custom work order through PFW/PFD Inventory using all of the available options in BOMP.

## PFW/PFD Interface

The order information is written to PFW/PFD's Order Entry module when you select The save button on the main order screen. Once the information is in PFW/PFD you can process the order as if it was entered in Platinum



## Work Order Report

Generates a "pick list" authorizing production to manufacture the assembly. The assembly detail is generated using the standard BOM or the customized work order.

**Platinum**  
for Windows by Best

**Maynard Software Solutions, Inc.**

2555 W 6200 North Smithfield, Utah 84335 Web Page: <http://www.maynardsoft.com> Main Office: (435) 563-1840 Support: (800) 672-9462